



Guidelines

Of

BIOENABLE (NITGEN)

Biometric Machine Installation

In

Windows based Computer System

For

***Online Direct Benefit Transfer
application***

"Farmers/Dealers/Manufacture"

(Version - 2.0)

Friday, June 9, 2017 Prepared By:

Centre for Research and Industrial Staff Performance (CRISP)

(Established under Indo – German Technical Co – Operation)

Postal Address: GPO Box 92, Bhopal – 462001.

Office Address: Shyamla Hills, Opp. Manas Bhavan, Bhopal-462002, M.P. (India)

Web: www.crispindia.com

Chapter 01

BIOENABLE (NITGEN)

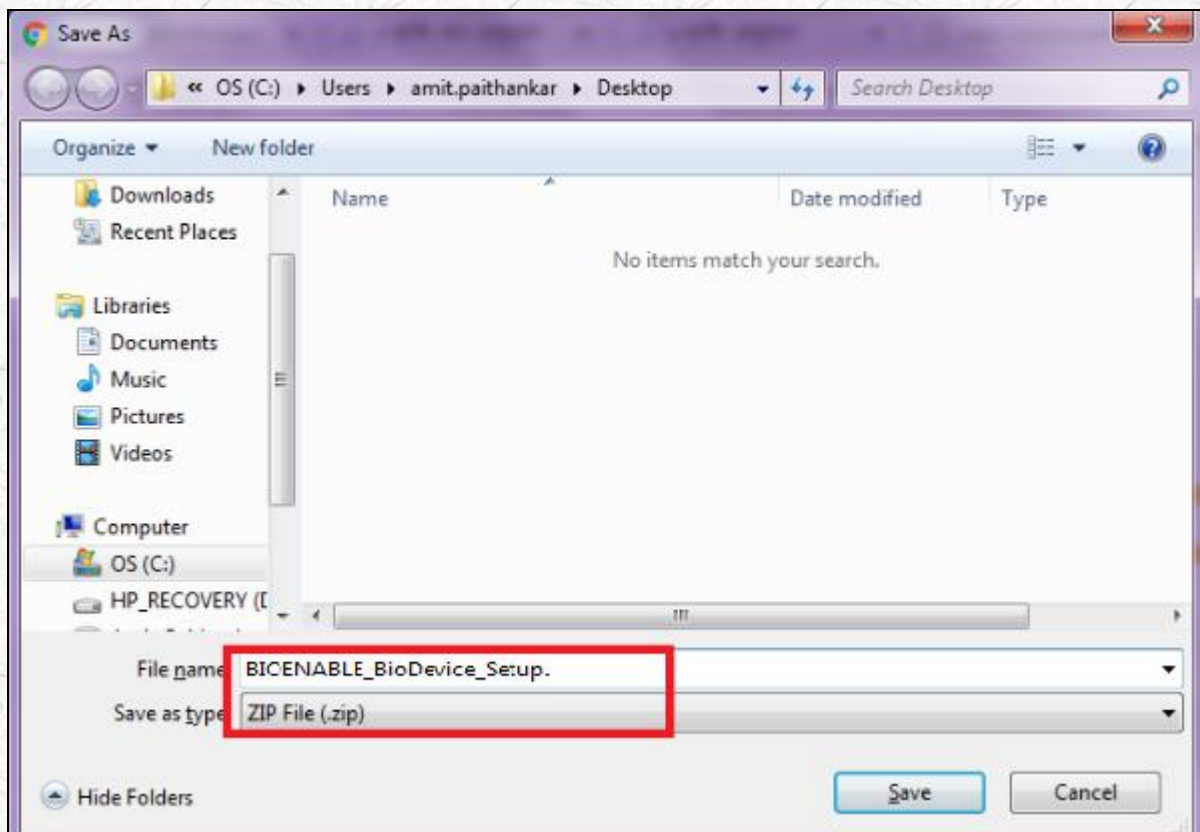
Device Services Setup

1. How to Install BIOENABLE (NITGEN) Biometric RDServices Setup?

User can download the [Setup](#) link as below mentioned...

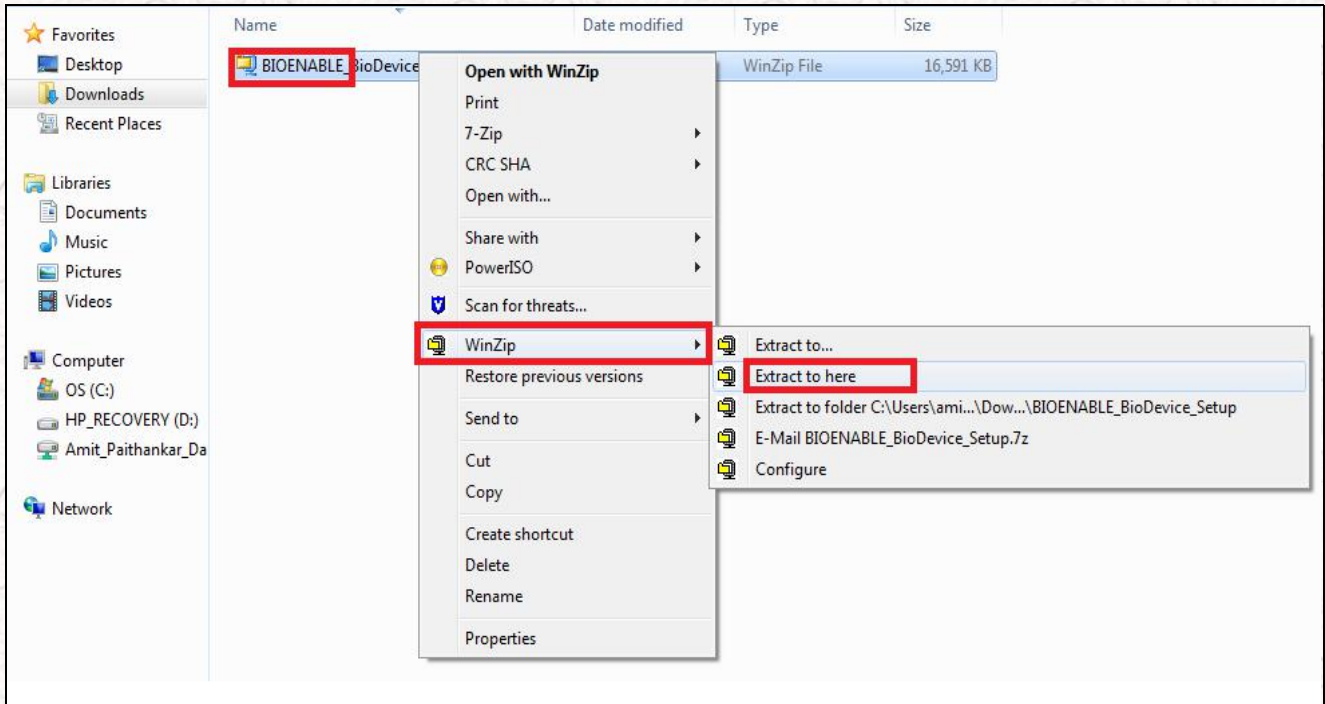
http://www.mpdage.org/BioDevice_Setup/BIOENABLE_BioDevice_Setup.zip

User can copy & paste at the URL and press Enter key so the below screen is appeared...



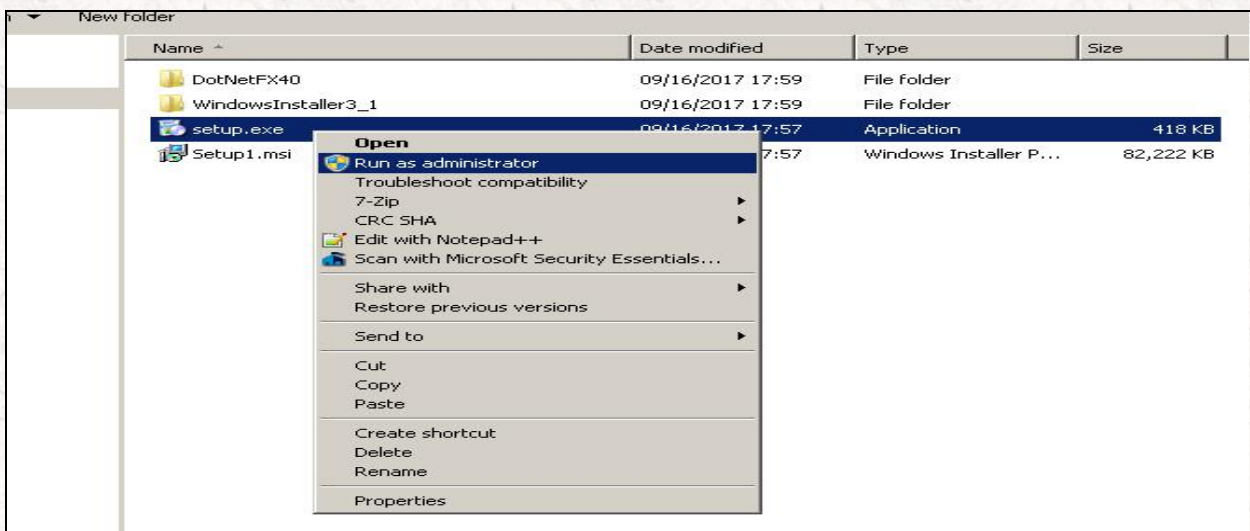
User choose the location (Desktop/Download etc...) where ever the saved this Biometric Device setup.

Right clicks on Biometric Device setup and do the extract as mentioned in below screen...

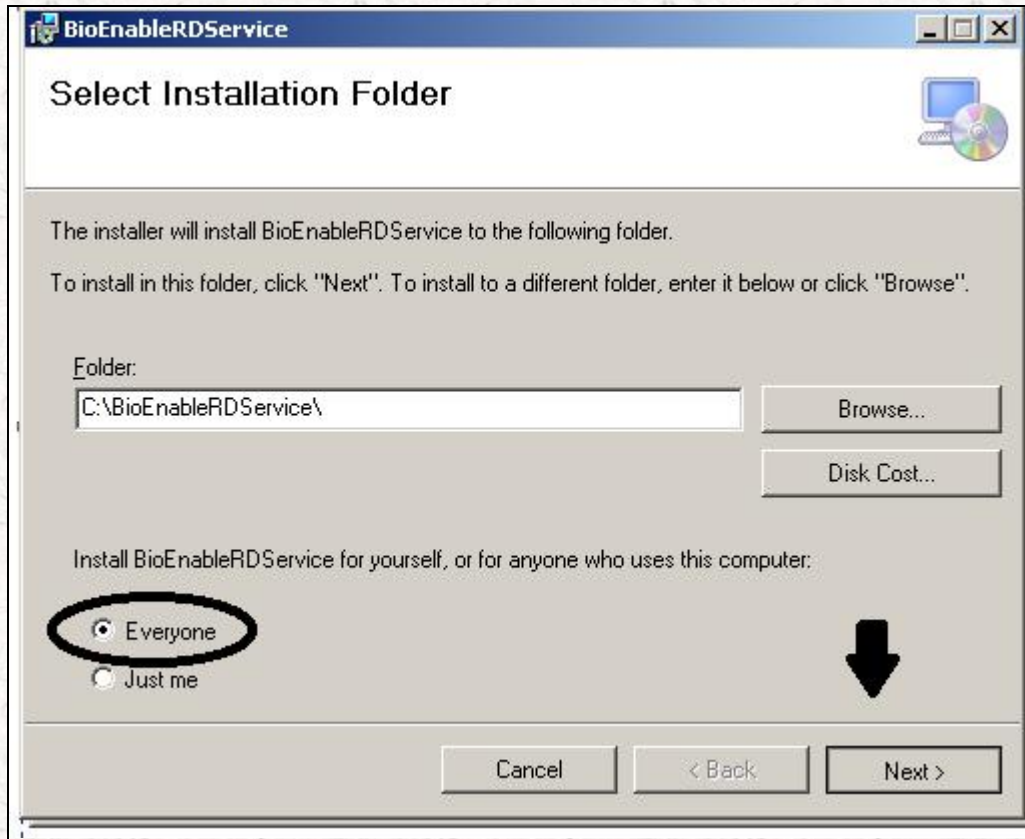


After extract the setup file follow the below steps are...

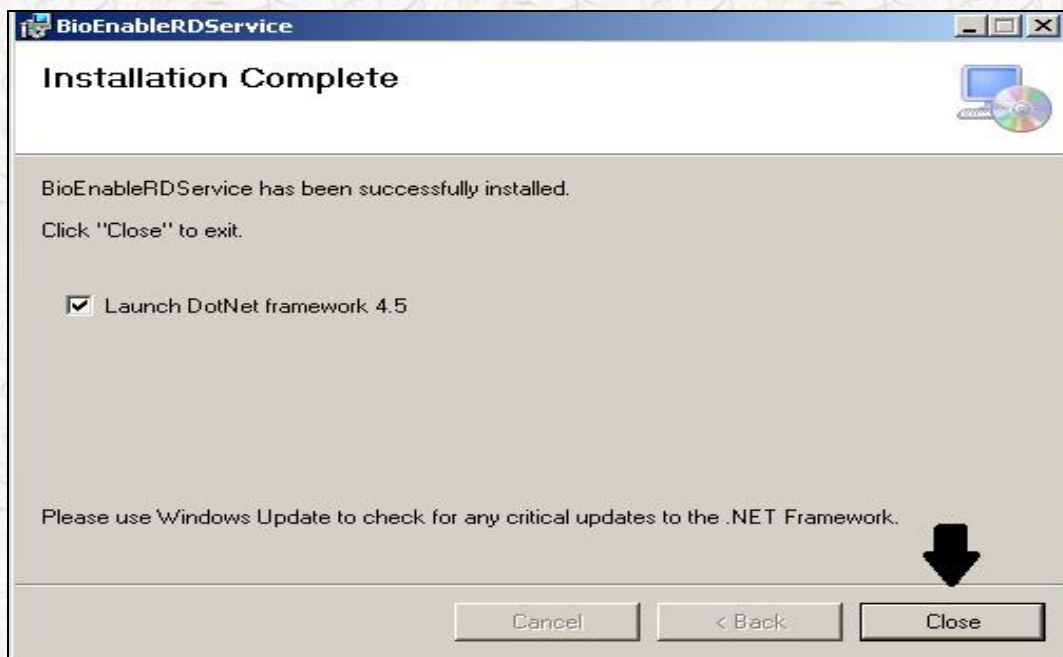
- Clicks on "BIOENABLE_BioDevice_Setup" folder



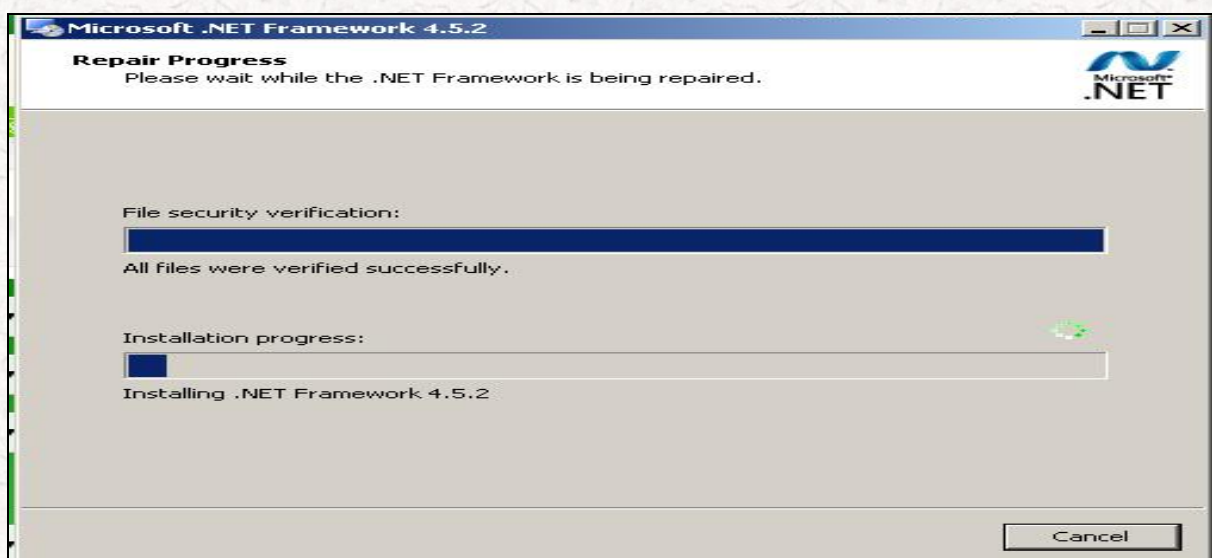
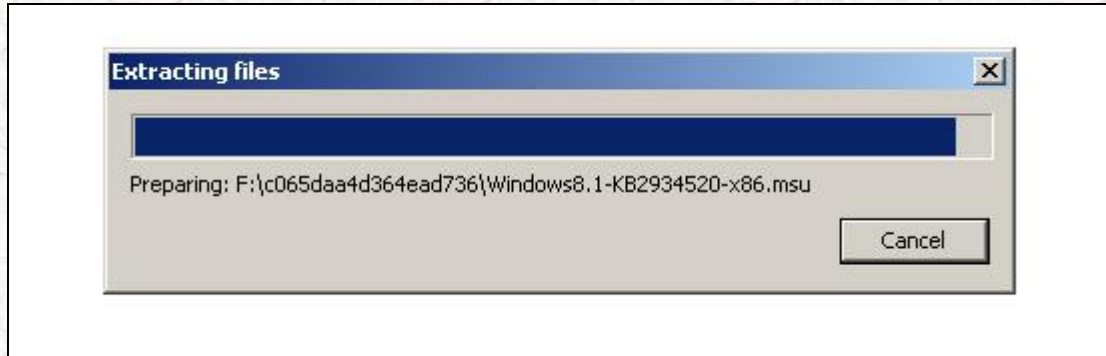
❖ Click Next button of setup



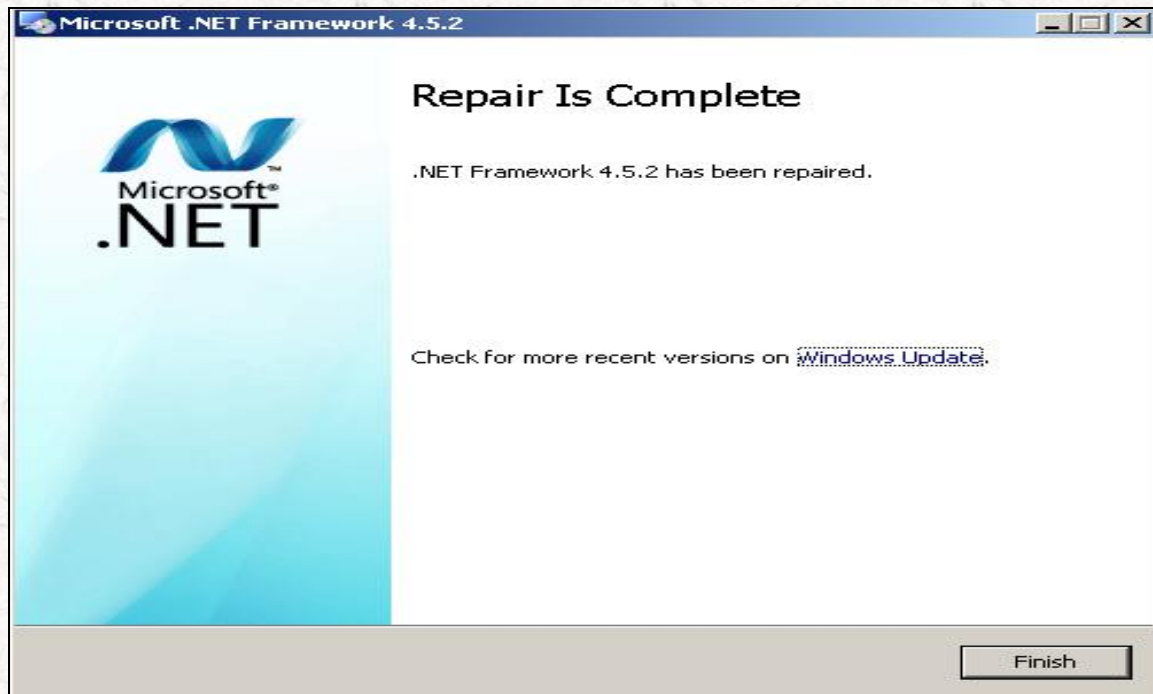
❖ Again Clicks Close button of setup



- ❖ **Setup is going on progress as mentioned in below screen. It will take 5 to 10 minute to complete installation.**



- ❖ **Now Click the Finish button to close it.**



At last now user can connect their Bio Metric Device with Computer CPU.